

> TEST RESULTS

> Carbon Deposit Cleaning

Photos show results of testing with & without Flashlube Injector Cleaner.

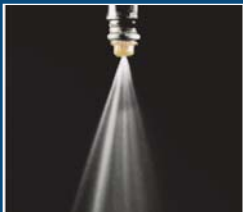


> Carbon build up on valves

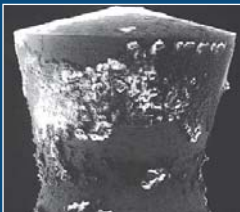


> After treating with Flashlube Injector Cleaner

> Fuel Injector clean up



> Shows injector flow & tip restricted by up to 25%



> Shows a clean injector flow & tip after treating with Flashlube Injector Cleaner

Flashlube Injector Cleaner improved dirty injector flow to within 1% of original 100% flow. Clean Injectors improves performance, fuel economy & exhaust emission reduction

> INJECTOR CLEANER

Flashlube Injector Cleaner is available in 50ml & 250ml pack sizes.



> Other Products in the Flashlube range:

- > Valve Saver Fluid
- > Diesel Conditioner
- > Heavy Duty Oil Stabiliser
- > Car & Truck Wash
- > Multi Purpose Grease
- > High Temperature Grease

Flashlube is recognised as a leader in its field, exporting to more than 10 countries around the world. Our unique formulation ensures Flashlube Injector Cleaner is leading the way in the fuel additives market.



For more information contact Flashlube

03 9329 8200

www.flashlube.com.au

F 002



Feel the difference!

INJECTOR CLEANER

Petrol • Gasoline • Benzine

Super Concentrated Synthetic Sulphur Replacement



Save money with **FlashLube**



> FLASHLUBE INJECTOR CLEANER

Flashlube Injector Cleaner is the very latest in synthetic fuel additive technology, designed to clean the fuel system, protect with superior lubrication qualities, and keep your car running at peak performance & efficiency.

With changes taking place in petrol formulations, particularly the reduction of Sulphur, now more than ever your engine needs the extra protection Flashlube Injector Cleaner delivers.

The reduction of Sulphur from petrol could potentially effect many fuel related parts on vehicles like fuel pumps, injectors & seals, as the lack of the natural lubricating properties of Sulphur are no longer present.

Reports from Europe show that the incidence of sticking or blocked injectors increased four fold since the beginning of 2004, coinciding with the introduction of Low Sulphur fuel.

Flashlube's superior lubricity additive will address these issues, and keep your fuel system clean & free from carbon gum & varnish build up. Flashlube Injector Cleaners unique synthetic Sulphur free formulation will also reduce exhaust emissions & improve fuel economy.

> How Does It Work?

Specifically formulated to clean, lubricate & protect petrol fuel systems and the upper cylinder area. Flashlube Injector Cleaner will save you money with improved fuel economy and help save the environment by reducing harmful emissions in all petrol engines with a combination of the latest synthetic oil & additives.

The big difference between Flashlube Injector Cleaner & most other brands is our unique formulation. Other brands are still using old technology Sulphur or Solvent based products, with some effectively adding up to 10 times more sulphur back into the fuel system.

> What is Sulphur

Sulphur is a naturally occurring lubricant found in petroleum products that supports the operation of engine components like fuel injectors & fuel pumps. The down side is that sulphur does not burn in the combustion process, enters the atmosphere as sulphur dioxide & returns as 'acid rain'.

The reduction of Sulphur in fuels is part of a global push to reduce exhaust pollution, improving public health. Flashlube Injector Cleaner replaces the Sulphur without the impact on the environment.



> Benefits

- > Cleans Injectors & fuel systems
- > Improves fuel economy
- > Lubricates Injectors, pumps & upper cylinder area
- > Provides exceptional lubricity for low sulphur fuel
- > Improves performance
- > Improves hard starting
- > Reduces harmful emissions
- > Extends engine life
- > Protects against corrosion
- > Smoother running engine

> Who Needs It?

- > **Flashlube Injector Cleaner is essential for use in all petrol powered;**
- > **Cars & Four Wheel Drives**
- > **Truck, Bus & Commercials**
- > **Agricultural, Industrial & Marine petrol applications.**
- > **Anyone who wants to save money** on fuel costs, improve vehicle performance & extend engine life.

> For more information visit www.flashlube.com.au

> Why Do I Need Flashlube Petrol Injector Cleaner

Carbon, gum & varnish deposits can accumulate in petrol powered vehicles due to low quality or unadditized fuels, and from certain types of driving patterns. Fuel system deposits may not be easily detectable by the average driver, but they can lead to:

- > Reduced fuel economy
- > Hard Starting
- > Reduced acceleration
- > Poor driveability - surging, stumbling, hesitation, stalling, or rough idling
- > Failing an emissions test
- > Power and compression loss
- > Engine "rap" or other noises
- > Dirty fuel system, including injectors, valves and combustion chamber

These problems compromise vehicle performance and are very frustrating to the average driver.

> How To Use It?

Flashlube Injector Cleaner can be added to the fuel tank before or after filling, at a rate of 50ml per 50 litres. Use each fill for best results. Available in larger size packs.

Treat Rate: 1Litre treats 1000Litres of Petrol.

